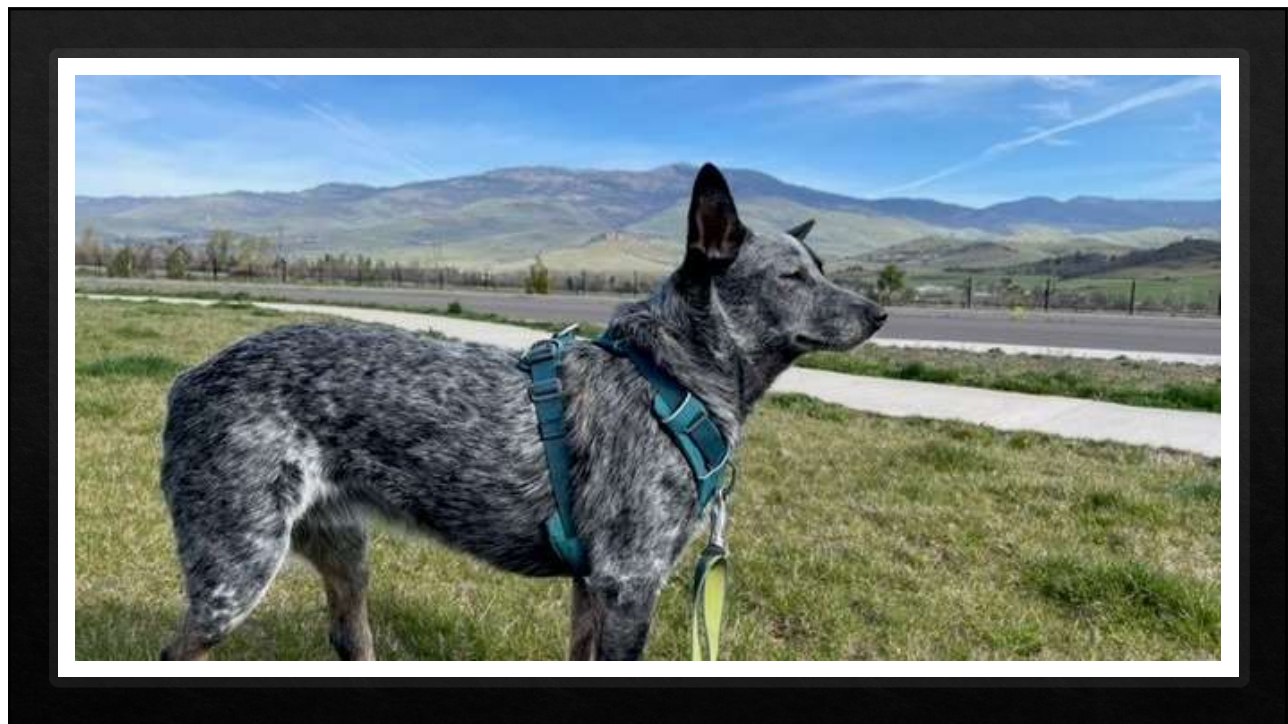




1



2



3

Why do we still have libraries?

4

“ We are at a point in our social evolution where the three most critical quality of life indicators:

Access to Education,
Access to Employment, and
Access to Public Health ”

rely on consistent and reliable digital and broader information access and sophisticated navigation skills.

5



6

News
Reviews+
Technology
Programs+
Design
People
Public Libraries

There Are No Lanes: Rural Libraries Do It ALL | Backtalk

by [Margo Gustina and Michael Norton](#)
Jun 14, 2022 | Filed in [News](#)

Responses to the pandemic from rural librarians represent an opportunity to better understand how libraries that want to make social well-being impacts can do so. The recent Institute of Museum and Library Services' "Empowering Readers, Empowering Citizens"

7

**LIBRARIES
TRANSFORMING
COMMUNITIES**
ACCESSIBLE SMALL AND
RURAL COMMUNITIES

ALAAmericanLibraryAssociation

A SPECIAL GRANT OPPORTUNITY FOR SMALL AND RURAL LIBRARIES

ala.org/LTCAccess

Applications open
November 1, 2022
through
February 28, 2023

Libraries Transforming Communities: Accessible Small and Rural Communities will offer more than \$7 million in grants to small and rural libraries to increase the accessibility of facilities, services, and programs to better serve people with disabilities.

To be eligible, a library must have a legal service area population of 25,000 or less and be located at least five miles from an urbanized area, in keeping with Institute of Museum and Library Services (IMLS) definitions of small and rural libraries.

8

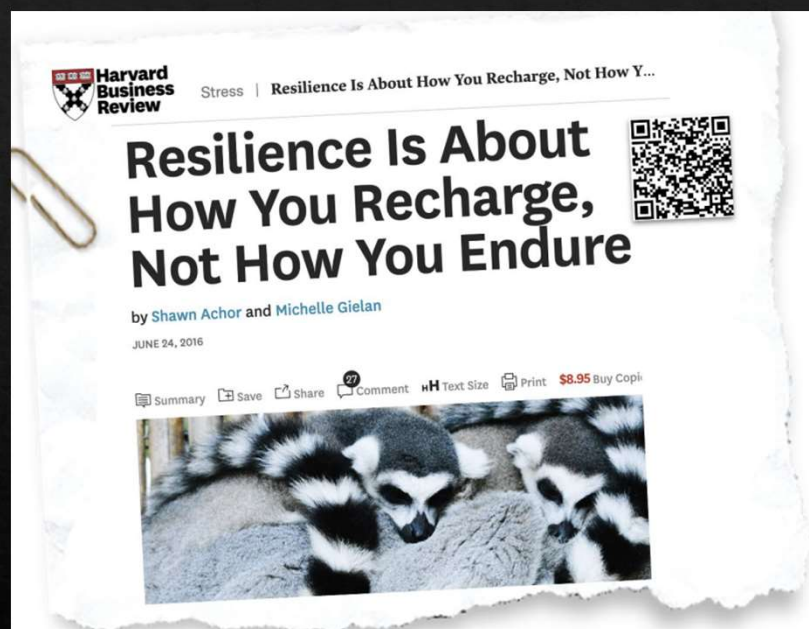


Think about your story

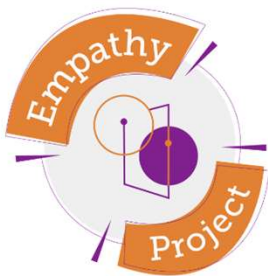
The application is your opportunity to explain why your project is **distinct**, what **benefit** it will provide to your community, and why it **deserves** to be funded.

Why is this project **exciting**, **unique**, and **impactful**?

9



10



Logo designed by Ayana Mack

Institutional and social empathy in COVID-19:

Open training modules for library and museum workers

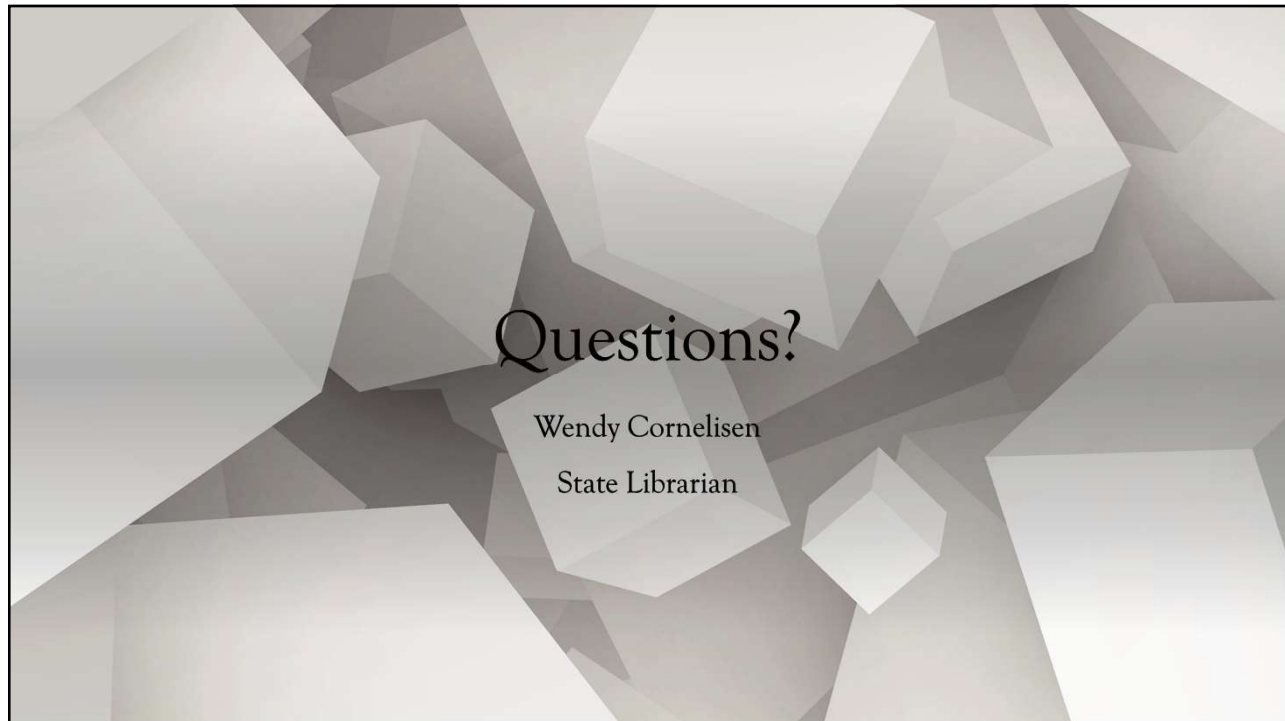
What is the Empathy Project?

The empathy project is an open, online, self-guided training for all library and museum workers. Immersive video and text-based case studies, and opportunities for self-reflection help you explore empathy in different contexts and learn how empathy can be applied to make our communities better places to live, study, and work.

11



12



13

Equitable access to library and information services
for all people of Oregon.

The State Library of Oregon cultivates, preserves,
and delivers library and information services to
foster lifelong learning and community engagement.

14